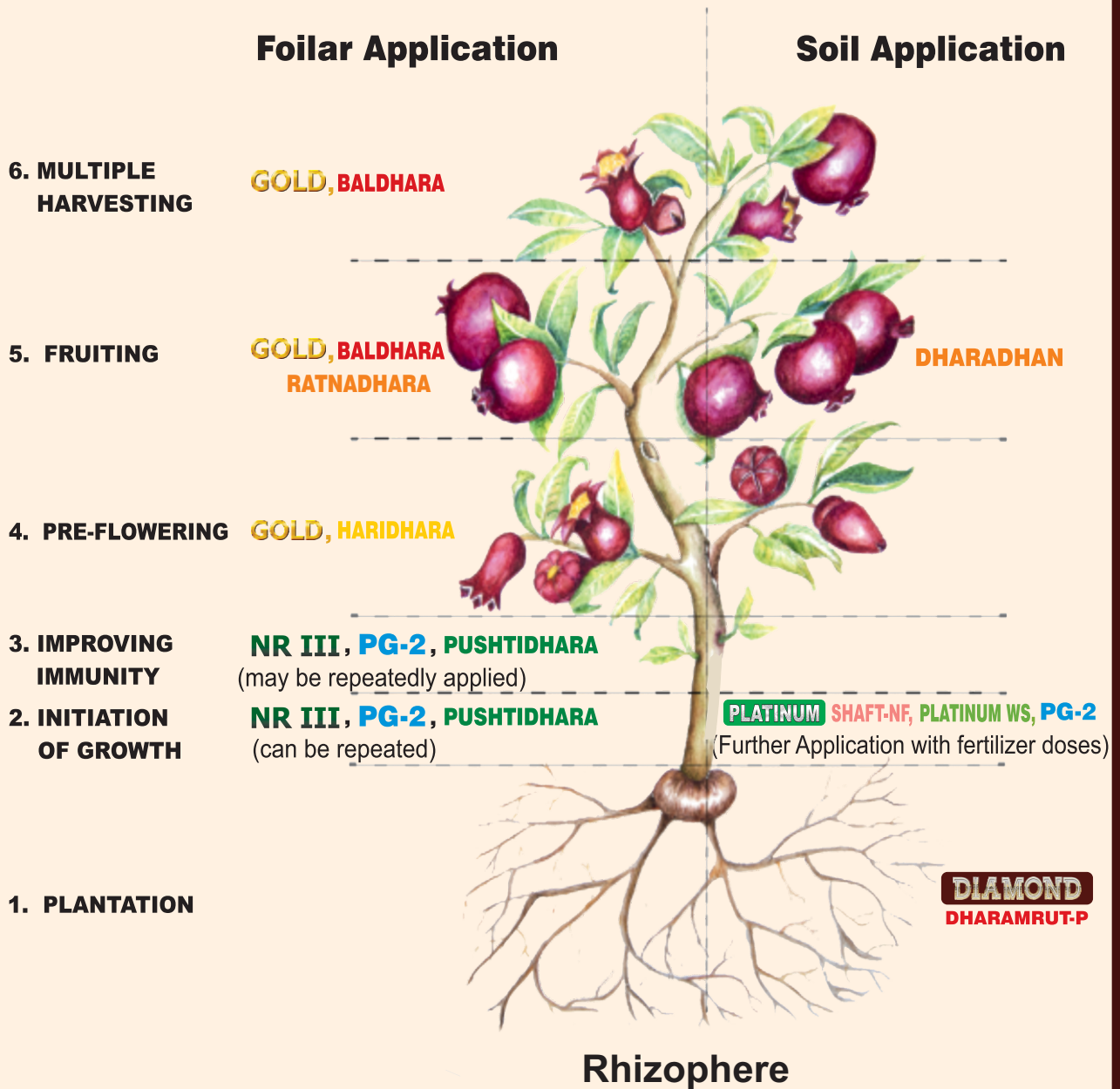
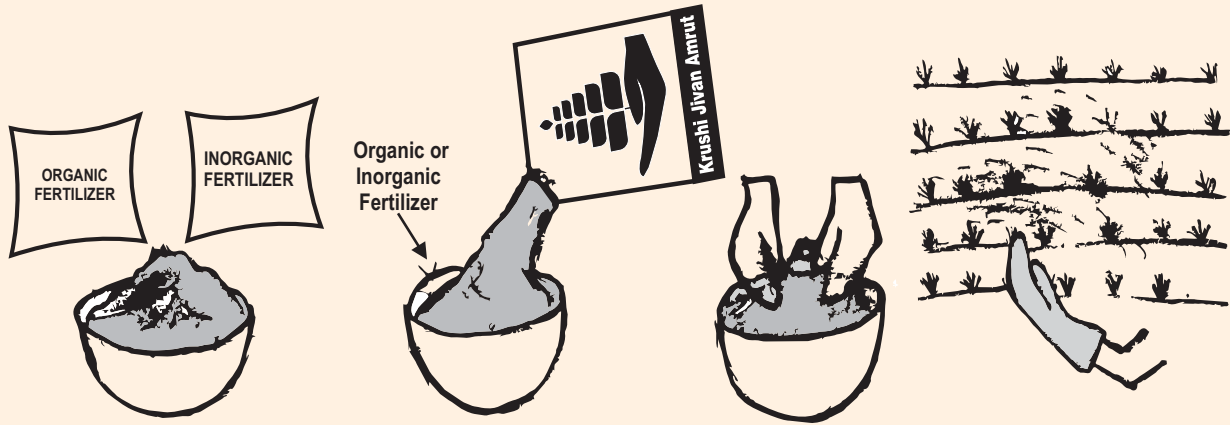


# Plant Physiology Product Application Model



## Mixing With Fertilizer



(A) Take Fertilizer (organic and / or inorganic) in a suitable container.

(B) Add Krishi Jivan Amrut to the Fertilizer

(C) Mix well with both hands

(D) Broadcast the mixture in farm along the rows of crops.

## Foliar



(A) Add Krishi Jivan Amrut product in container of 10 Liter Water.

(B) Let it soak for 24-48 hours.

(C) Apply as fine mist so as to cover the entire crop including the back sides of the leaves; preferably in the late evening.

# DHARAMRUT-P

Natural Organic Fertilizer -  
Phosphate Rich Organic Manure

## Product Details :

DHARAMRUT – P is prepared by a proprietary mixture of highly quality compost and natural rock phosphate and serves not only as a source of the macro nutrient 'P' but also provides Organic Carbon crucial for improving the C:N ratio in the rhizosphere of the crop. The compost forms an organic foundation of stabilized nutrients free from ammonia or soluble nitrate and rather 'N' locked up as proteins, amino acids and other biological components. DHARAMRUT – 'P' is a safe and nutrient rich balanced Organic Fertilizer.

## Use :

### a) Dosage :

60 Kg. per Acre

### b) Method of Application :

Either direct use of 40 – 80 Kg Dharamrut-P per acre OR mixed along with other organic or chemical fertilizers and applied to the soil either during ploughing or at any other stage of cultivation.

## Storage & Disposal :

Store product in cool dry place away from direct sunlight and moisture.

## Available Packing :

20 kg

Composition	Qty. (%w/w)
a) N (T) (Min)%	0.4%
b) P <sub>2</sub> O <sub>5</sub> (Min)%	10.4%
c) K <sub>2</sub> O (Min)%	-
d) Moisture (Max)%	25.00%
e) Organic Carbon (Min)%	7.9%
f) C:N Ratio	<20.00



# PLATINUM

## Natural Soil Health Promoter

### Product Details :

Platinum contains a well-diversified consortium of non-genetically modified, non-pathogenic, safe, eco-friendly and micro-encapsulated soil beneficial microbes capable of improving the soil health, viz, physical, chemical and biological properties of the soil. These conditions allow enhanced functionality of nutrient absorption, secondary root formation & disease suppression. The co-factors included in the product allows rapid growth and establishment of the microbes in the rhizosphere of the crop. A symbiotic relationship develops between the microbes and root structure of the plant. In exchange for the benefits derived by the crop roots, the microbes help the plant cope with both biotic and abiotic stresses such as floods, drought, excess salinity, etc.

### Use :

- Dosage:** 500 g per Acre.
- Method of Application :**  
500 g Platinum may be mixed with either Organic or Inorganic Fertilizer and applied or 50 g may be mixed with 15 L water and applied as drenching.
- Frequency of Application :**  
The total number of total application of Platinum in a crop season can be estimated as follows :

Sr. No.	Crop Season Duration (In Months)	Total Number of Applications of 500 g Platinum
1	4 Months or less	1
2	4 Months to 8 Months	2
3	More than 8 Months	3

In case of certain high energy and durable crops such as Banana, Sugarcane, Cotton, etc, the dosage can be increased to 1 kg per acre.

### Tips & Techniques :

- Frequent doses of lower quantity provide best results.
- Where the crop is stressed by an acute fungal or pest attack, it is desirable and advised that the product is soaked in water for 24 to 48 hours and applied as a drenching.
- In case of acute conditions of abiotic and biotic stresses, 500 g of both DIAMOND and PLATINUM can be pre-soaked and applied as drenching.

### Available Packing :

500 g

Composition	Qty. (%w/w)
a) Proprietary blend of beneficial and naturally occurring microbes (Total Microbial CFU Count : $1 \times 10^8$ /g min.)	4.00%
b) Bacterial Food Supplements (co-factors) & Growth Accelerators	27.50%
c) Mineral Salts	1.00%
d) Beneficial & Inert Carriers	67.50%
<b>Total</b>	<b>100.00%</b>

### Storage & Disposal :

- The contents of the package should be used within 6 months of opening the pouch.
- Store product in cool dry place away from direct sunlight and moisture.



### Precautions :

- Eyes:**  
Moderately irritating to the eyes. If product comes in contact with eyes, flush eyes with cool water for about 15 minutes.
- Dermal:**  
Dermal exposure may cause mild irritation to the skin. Wash hands thoroughly after use.

# PLATINUM WS

(100% Water Soluble)  
Natural Soil Health  
Promoter

## Product Details :

Platinum WS contains a well-diversified consortium of non-genetically modified, non-pathogenic, safe, eco-friendly and micro encapsulated soil beneficial microbes capable of improving the soil health, viz, physical, chemical and biological properties of the soil. These conditions allow enhanced functionality of nutrient absorption, secondary root formation & disease suppression. The co-factors included in the product allows rapid growth and establishment of the microbes in the rhizosphere of the crop. A symbiotic relationship develops between the microbes and root structure of the plant. In exchange for the benefits derived by the crop roots, the microbes help the plant cope with both biotic and abiotic stresses such as floods, drought, excess salinity, etc.

This 100% water soluble formulation is especially useful for use in drip irrigation.

## Use :

a) **Dosage :** 250 g per Acre.

b) **Method of Application :**

250 g PLATINUM WS may be applied mixed with water and applied through Drip Irrigation or as a drenching with a spray pump. The content should be preferably pre-soaked in water for 24 to 48 hours prior to use.

c) **Frequency of Application :**

The total number of total applications of Platinum WS in a crop season can be estimated as follows :

Sr. No.	Crop Season Duration ( In Months)	Total Number of Applications of 500 g Platinum WS
1	4 Months or Less	1
2	4 Months to 8 Months	2
3	More than 8 Months	3

In case of certain high energy and durable crops such as Banana, Sugarcane, Cotton, etc, the dosage can be increased to 1 kg per acre.

## Tips & Techniques :

- Frequent doses of lower quantity provide best results.
- Where the crop is stressed by an acute fungal or pest attack, it is desirable and advised that the product is soaked in water for 24 to 48 hours and applied as a drenching.

## Available Packing :

250 g

Composition	Qty. (%w/w)
a) Proprietary blend of beneficial and naturally occurring microbes (Total Microbial Count : $1 \times 10^8$ CFU/g min.)	4.00 %
b) Bacterial Food Supplements (co-factors) & Growth Accelerators	95.00 %
c) Mineral Salts	1.00 %
<b>Total</b>	<b>100.00 %</b>

## Storage & Disposal :

- The contents of the package should be used within 6 months of opening the packing.
- Store product in cool dry place away from direct sunlight and moisture.



## Precautions :

- Eyes:** Moderately irritating to the eyes. If product comes in contact with eyes, flush eyes with cool water for about 15 minutes.
- Dermal:** Dermal exposure may cause mild irritation to the skin. Wash hands thoroughly after use.

# DHARADHAN

Natural Soil Health Promoter

## Product Details :

Dharadhan is a Natural Soil Health Promoter containing necessary carbon source for multiplication of naturally occurring beneficial microbes & slow releasing Humic granules to increase porosity of the soil which in return increases water holding capacity of soil following healthy growth of roots of crops and permit aeration for growth of microbes. It helps in maintaining pH of soil along with increase in organic carbon so as to balance the carbon:nitrogen (C:N) ratio which will ultimately enhance all biological activities in soil. Also improves the quantity & quality of flowers and fruits.

## Use :

### a) Dosage :

8 - 16 kg per Acre

### b) Method of Application :

8 - 16 kg Dharadhan per acre can be applied either directly or mixed with other organic or chemical fertilizers to the soil at the time of "Earthing up" around 30-45 days after plantation and again just before the final maturity of the fruit or 15 days before harvesting.

## Tips & Techniques :

- For good results make use of Dharadhan with Dharamrut or any other suitable fertilizer.
- To further enhance growth of crop, use mixture of Dharadhan and Platinum at the time of earthing up process.
- Humid Soil enhances the activity of the product.

## Available Packing :

5 kg , 8 kg

Composition	Qty. (%w/w)
a) Bentonite Granules	84.00%
b) Humic Granules	15.00%
c) Premium Bio Compost	1.00%
<b>Total</b>	<b>100.00%</b>



## Storage & Disposal:

- The contents of the package should be used within 6 months of opening the packing.
- Store product in cool dry place away from direct sunlight and moisture.

# SHAFT-NF

Soil Health and Fertility Treatment for Nematode  
& Fungal Affected Soil

## Product Details :

SHAFT-NF is a special preparation of encapsulated & bio-diversified beneficial microbes capable of rapidly establishing in the rhizosphere of plants grown in soils having high levels of nematode and pathogenic fungi content. The presence of a higher population of beneficial microbes allow natural disease suppression, better formation of primary & secondary roots and enhanced biological functions of the soil.

## Use :

a) **Dosage :** 500 g per Acre

b) **Method of Application :**

- 1) 500 g SHAFT-NF may be mixed and applied with suitable fertilizer. Or
- 2) 50 g may be mixed with 15 L water and applied as drenching.

c) **Frequency of Application :**

SHAFT NF may be applied anytime during the cycle. Multiple application may be applied in case of acute situations.

## Tips & Techniques :

- a) The minimum time gap between two doses should not be less than 6 days.
- b) For drenching, the product should be pre-soaked in water for 24 to 48 hours and then filtered through a fine mesh cloth before applying through spray or drip irrigation system.

## Storage & Handling :

- a) The contents of the package should be used within 6 months of opening the packing.
- b) Store product in cool dry place away from direct sunlight and moisture.

## Available Packing :

500 g

Composition		Qty. (%w/w)
a)	Proprietary blend of beneficial and naturally occurring encapsulated microbes (Total Microbial CFU Count : $1 \times 10^8$ /g min)	5.00 %
b)	Premium Bio Compost	35.00 %
c)	Beneficial & Inert Carrier	60.00 %
<b>Total</b>		<b>100.00 %</b>
Specifications		
a)	Total Viable Propagules / g min	100/g
b)	Infectivity Potential (in test roots /g of mycorrhiza inoculum used)	1200 IP/g
c)	pH	6.0-7.5



## Precautions :

a) **Eyes:**

Moderately irritating to the eyes. If product comes in contact with eyes, flush eyes with cool water for about 15 minutes.

b) **Dermal:**

Dermal exposure may cause mild irritation to the skin. Wash hands thoroughly after use.

# NR - III

## Bio Pesticide

### Product Details :

NR-III is a unique formulation of the strain *Trichoderma Viride*; carefully micro-encapsulated allowing application by mixing with chemical fertilizers. Additionally, the strain has been processed through a lengthy adaptation process to resist high temperature conditions and perform critical functions which support optimal growth of the plant. *Trichoderma Viride* in combination with various eco-friendly microbes play a major role in controlling soil & air borne pathogens including powdery mildew, sucking pest and other microscopic aggravating factors.

### Use :

a) **Dosage :** 1 kg per Acre.

b) **Method of Application :**

500g NR III may be mixed with either Organic or Inorganic Fertilizer and applied or 50 g may be mixed with 15 L water and applied as drenching. This product may also be applied as a foliar to control aerial fungal attacks.

c) **Frequency of Application :**

The product can be used at the rate of 3.5 g / L and should be sprayed as a fine mist in the evening when the direct sunlight is minimal.

### Tips & Techniques :

a) Frequent doses of lower quantity provide best results.

b) Where the crop is stressed by an acute fungal or pest attack, it is desirable and advised that the product is soaked in water for 24 to 48 hours and applied as a drenching.

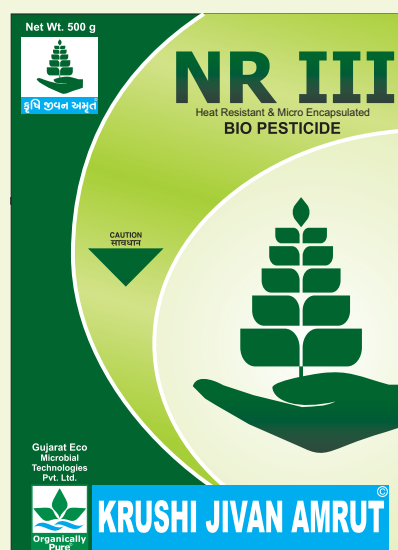
### Available Packing :

500 g, 1 kg.

Composition	Qty. (%w/w)
a) <i>Trichoderma viride</i> Spores & mycelia (CFU Count: $2 \times 10^6$ / gm min)	1.50%
b) Talc Powder	97.00%
c) Carboxy Methyl Cellulose	1.50%
<b>Total</b>	<b>100.00%</b>

### Storage & Disposal :

- The contents of the package should be used within 6 months of opening the pouch.
- Store product in cool dry place away from direct sunlight and moisture.



### Precautions :

- Eyes:**  
Moderately irritating to the eyes. If product comes in contact with eyes, flush eyes with cool water for about 15 minutes.
- Dermal:**  
Dermal exposure may cause mild irritation to the skin. Wash hands thoroughly after use.

# PG-2

## Carrier Based Consortia (Bio Fertilizer)

### Product Details :

PG-2 is a unique & encapsulated consortium of Nitrogen Fixing, Phosphate Solubilising & Potash Mobilising Bacteria that release metabolites which Induce Systematic Resistance (ISR) in the crop and enhance its immune system against viral and other infections. The product can be used as a foliar (absorption through stomata on the backside of the leaves) or by drenching (absorption by root system). The application of this product naturally lead to a healthier and stronger crop growth.

### Use :

a) **Dosage** : 1.5 g per Litre Pump

b) **Method of Application:**

- 1) 25 g per 16 L to be sprayed as fine mist on the plant and leaves (including back side of leaf) Or
- 2) 250 g may be mixed with either Organic or Inorganic Fertilizer and applied to 1 acre as soil application. Or
- 3) 25 g per 16 L may be mixed with water and applied as drenching.

c) **Frequency of Application:**

The minimum time gap between two doses should not be less than 7 days.

### Tips & Techniques :

- a) Frequent doses of lower quantity provide best results.
- b) Where the crop is stressed by an acute fungal or pest attack, it is desirable and advised that the product is soaked in water for 24 to 48 hours and applied as a drenching.
- c) The foliar application should be applied as a fine mist and carefully sprayed to lightly coat all the parts of plant thoroughly.
- d) The application should be done either only in the morning or preferably late in the evening to avoid direct sunlight. It is desirable that the foilar sprays are applied during conditions of lower temperature, humidity and wind, when possible on cloudy days.

### Storage & Handling :

- a) The contents of the package should be used within 6 months of opening the packing.
- b) Store product in cool dry place away from direct sunlight and moisture.

### Available Packing :

250 g

Composition	Qty. (%w/w)
a) Nitrogen Fixing Bacteria (CFU Count: $1 \times 10^7$ /g min)	1.00 %
b) Phosphate Solubilising Bacteria (CFU Count: $1 \times 10^7$ /g min)	1.00 %
c) Potash Mobilising Bacteria (CFU Count: $1 \times 10^7$ /g min)	1.00 %
d) Natural, Inert & Beneficial Carrier	96.50 %
e) Microbial Growth Nutrients & Accelerators	0.50 %
<b>Total</b>	<b>100.00 %</b>



### Precautions :

a) **Eyes:**

Moderately irritating to the eyes. If product comes in contact with eyes, flush eyes with cool water for about 15 minutes.

b) **Dermal:**

Dermal exposure may cause mild irritation to the skin. Wash hands thoroughly after use.

# SILVER PUSHTIDHARA

## Natural Plant Tonic (Immunity)

### Product Details :

Combination of Potassium Salts of Herbal oil mixture, Fulvic Acid and Aloe vera boost plant growth by stimulating plant enzymes through metabolism which increases the rate of photosynthesis and improves uptake of minerals including proteins and irons. It also increases the resistance against biotic and abiotic stresses and diseases, promoting healthy plants with increased yield.

### Use :

a) **Dosage** : 3.5 ml per Litre

b) **Method of Application** :

50 ml of Silver Pushtidhara to be mixed with 15L water and sprayed as a foliar.

c) **Frequency of Application** :

Silver Pushtidhara may be safely repeated every 7 to 10 days, or as required.

### Tips & Techniques :

- The foliar application should be applied as a fine mist and carefully sprayed to lightly coat all the parts of plant thoroughly.
- Pushtidhara shows best results when started early in the crop cycle (first spray recommended at 20 days from plantation date).
- The application should be done either only in the morning or preferable late in the evening to avoid direct sunlight. It is desirable that the foliar sprays are applied during conditions of lower temperature, humidity and wind, when possible on cloudy days.

### Storage & Disposal :

- The contents of the package should be used within 6 months of opening the bottle.
- Store product in cool dry place away from direct sunlight and moisture.

### Available Packing :

500 ml, 1 Ltr.

Composition	Qty. (%w/w)
a) Potassium Salts of Herbal Oil Mixture	18.20%
b) Fulvic Acid	1.00%
c) Aloe vera (as Natural Surfactant)	1.00%
d) De-mineralized Aqua	Q.S.
<b>Total</b>	<b>100.00%</b>



### Precautions :

a) **Eyes:**

Moderately irritating to the eyes. If product comes in contact with eyes, flush eyes with cool water for about 15 minutes.

b) **Dermal:**

Dermal exposure may cause mild irritation to the skin. Wash hands thoroughly after use.

# GOLD

## Natural Growth Promoting Foliar Spray

### Product Details :

GOLD contains a well-diversified consortium of non-genetically modified, non-pathogenic, safe, eco-friendly and micro-encapsulated soil beneficial microbes. GOLD, as a foliar spray, intensifies the physiological processes of the plant, especially at the various critical stages of the crop life cycle such as growth, flowering, and fruiting stages, thereby improving the quantity and quality of the resulting yield. The application of beneficial microbes through leaves help in nutrient assimilation. The plant is thus stimulated and results into carbon sources being released as plant exudates. This leads to increased biological activity in the soil, viz, secretion of disease suppressive bio chemicals, plant hormones, antibiotics, vitamins and other substances beneficial to the plant.

### Use :

- Dosage:** 500 g per Acre.
- Method of Application:**  
50 g GOLD to be mixed with 15 L water & sprayed as a foliar.
- Frequency of Application :**  
The total number of total application of gold in a crop season can be estimated as follows :

Sr. No.	Physiological Stage of Crop	Timing of Application
1	As crop enters growth stage	Usually 20 to 25 days after plantation
2	Prior to the plant entering flowering (or equivalent) stage	Should be applied 3 to 5 days before flowering starts. Usually occurs at 45 to 60 days after plantation in most plants.
3	Fruit bearing stage	First application should be done when fruiting initiates.
4	Harvesting Stage	Regular sprays after each harvesting may be applied with half doses.

### Tips & Techniques :

- For best results, the GOLD may be pre-soaked in water for 24 to 48 hours before used.
- Frequent doses of lower quantity provide best results.
- In sensitive crops such as cumin, coriander, roses, etc, half doses should be used.
- The foliar application should be applied as fine mist and carefully to lightly coat all the part of plant thoroughly.
- The application should be done either early in the morning or preferable late in the evening to avoid direct sunlight. It is desirable that the foliar sprays are applied during conditions of lower temperature, humidity and wind, when possible on cloudy days.

### Available Packing :

500 g

### Composition

Qty. (%w/w)

a) Proprietary blend of beneficial and naturally occurring microbes (Total Microbial CFU Count: $5 \times 10^7$ /g min.)	1.00 %
b) Bacterial Food Supplements & Growth Accelerators	35.00 %
c) Mineral Salts	1.00 %
d) Beneficial & Inert Carriers	63.00 %
<b>Total</b>	<b>100.00 %</b>

### Storage & Disposal :

- The contents of the package should be used within 6 months of opening the pouch.
- Store product in cool dry place away from direct sunlight and moisture.



### Precautions :

- Eyes:**  
Moderately irritating to the eyes. If product comes in contact with eyes, flush eyes with cool water for about 15 minutes.
- Dermal:**  
Dermal exposure may cause mild irritation to the skin. Wash hands thoroughly after use.

# SILVER HARIDHARA

## Natural Plant Tonic (Flowering)

### Product Details :

Combination of Potassium Salts of Herbal oil mixture, Protein Hydrolysate and Humic/Fulvic in Silver Haridhara help ensure a healthy growth of the crop. Silver Haridhara promotes healthy and increased flowering and prevents flower dropping. Silver Haridhara also helps the plant cope with both biotic and abiotic stresses and allows optimal plant performance.

### Use :

a) **Dosage** : 3.5 ml per Litre

### b) Method of Application :

50 ml of Silver Haridhara to be mixed with 15L water and sprayed as a foliar.

### c) Frequency of Application :

Silver Haridhara may be safely repeated every 7 to 10 days, or as required. Silver Haridhara spray is recommended just prior to the flowering stage of the plant.

### Tips & Techniques :

- The foliar application should be applied as a fine mist and carefully sprayed to lightly coat all the parts of plant thoroughly.
- The application should be done either only in the morning or preferably late in the evening to avoid direct sunlight. It is desirable that the foliar sprays are applied during conditions of lower temperature, humidity and wind, when possible on cloudy days.

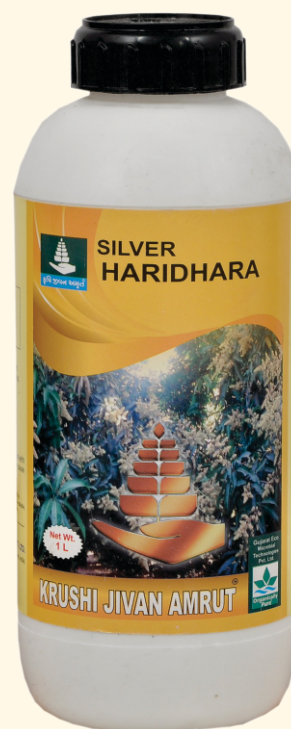
### Storage & Disposal :

- The contents of the package should be used within 6 months of opening the bottle.
- Store product in cool dry place away from direct sunlight and moisture.

### Available Packing :

500 ml, 1 Ltr.

Composition	Qty. (%w/w)
a) Potassium Salts of Herbal Oil Mixture	7.82%
b) Protein Hydrolysate	8.00%
c) Humic/ Fulvic	5.00%
d) Demineralized Aqua	Q.S
<b>Total</b>	<b>100.00%</b>



### Precautions :

- Eyes :**  
Moderately irritating to the eyes. If product comes in contact with eyes, flush eyes with cool water for about 15 minutes.
- Dermal :**  
Dermal exposure may cause mild irritation to the skin. Wash hands thoroughly after use.

# SILVER BALDHARA

Natural Plant Tonic  
(Growth & Development)

## Product Details :

The Proteinogenic Amino Acid in Baldhara plays a vital role in the growth, flowering & fruiting stages of the crop. It also improves luster, weight and taste of the final fruit.

## Use :

a) **Dosage :** 0.6 ml per Litre

b) **Method of Application :**

10 ml of Silver Baldhara to be mixed with 15L water and sprayed as a foliar.

c) **Frequency of Application :**

Baldhara may be used at the flowering stage, fruiting stage and after each picking during the harvesting stage.

## Tips & Techniques :

- The foliar application should be applied as a fine mist and carefully sprayed to lightly coat all the parts of plant thoroughly.
- The application should be done either only in the morning or preferably late in the evening to avoid direct sunlight. It is desirable that the foliar sprays are applied during conditions of lower temperature, humidity and wind, when possible on cloudy days.

## Storage & Disposal :

- The contents of the package should be used within 6 months of opening the bottle.
- Store product in cool dry place away from direct sunlight and moisture.

## Available Packing :

100 ml, 250 ml, 500 ml

Composition	Qty. (%w/w)
a) Proteinogenic Amino Acid	15.00%
b) Organic Stabilizer (Polyol)	15.00%
c) De-mineralized Aqua	Q.S.
<b>Total</b>	<b>100.00 %</b>



## Precautions :

- Eyes:**  
Moderately irritating to the eyes. If product comes in contact with eyes, flush eyes with cool water for about 15 minutes.
- Dermal:**  
Dermal exposure may cause mild irritation to the skin. Wash hands thoroughly after use.

# HUMIGROW

## Shiny Humic Flakes

### Product Details :

Derived from naturally occurring Leonardite, Humigrow is a premium quality organic source naturally rich in Potassium. Potassium is believed to improve the plant resistance against stressed conditions like drought and uncertain climatic changes. These shiny flakes enrich the soil and enhance essential plant physiology resulting in better and healthy growth, flowering and fruiting.

### Composition :

Naturally occurring Humic flakes rich in Potassium & Humic Acid.

### Use :

#### a) Dosage :

500 g per Acre

#### b) Method of Application :

Apply 500 g Humic flakes in 1 Acre. May be applied to all crops including Mango, Chickoo, Banana, Tea, Coffee, Groundnut, Grapes, Chillies, Sugarcane, Flowers, etc.

### Available Packing :

500 g, 2.5 kg, 20 kg



### Storage & Disposal :

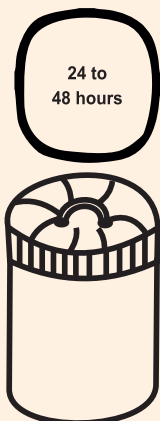
- The contents of the package should be used within 6 months of opening the packing.
- Store product in cool dry place away from direct sunlight and moisture.



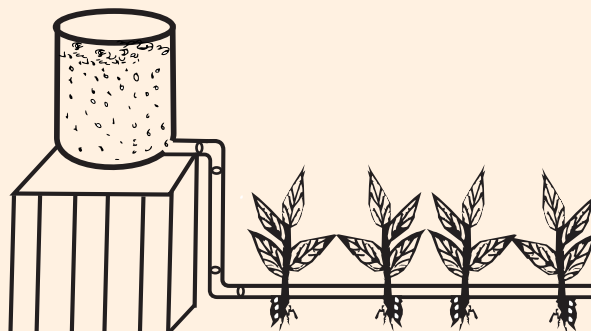
## Drip Irrigation



(A) Add Krishi Jivan Amrut product in container of 10 Liter Water.



(B) Let it soak for 24-48 hours.



(C) Allow the concentrated mixture to drip near the roots of the plants with help of pipes.

## Drenching



(A) Add Krishi Jivan Amrut product in container of 10 Liter Water.



(B) Mix well and let it soak for 24-48 hours (as required).



(C) Apply the mixture near the root zone of each crop.

# SILVER RATNADHARA

## Natural Plant Tonic (Immunity)

### Product Details :

Combination of Potassium Salts of Herbal oil mixture, Fulvic Acid and Aloe vera in Silver Ratnadhara enhances plant health by building its own immunity to cope with abiotic and biotic stresses. The stabilized active components of the herbal extracts play a key role in improving the performance and health of the crop.

### Use :

a) **Dosage :** 1 ml per Litre

b) **Method of Application :**

15 ml of Silver Ratnadhara to be mixed with 15L water and sprayed as a foliar.

c) **Frequency of Application :**

Silver Ratnadhara may be used as required. A minimum of 5 to 7 days gap between sprays is recommended.

### Tips & Techniques :

a) The foliar application should be applied as a fine mist and carefully sprayed to lightly coat all the parts of plant thoroughly.

b) The application should be done either only in the morning or preferably late in the evening to avoid direct sunlight. It is desirable that the foliar sprays are applied during conditions of lower temperature, humidity and wind, when possible on cloudy days.

### Storage & Disposal :

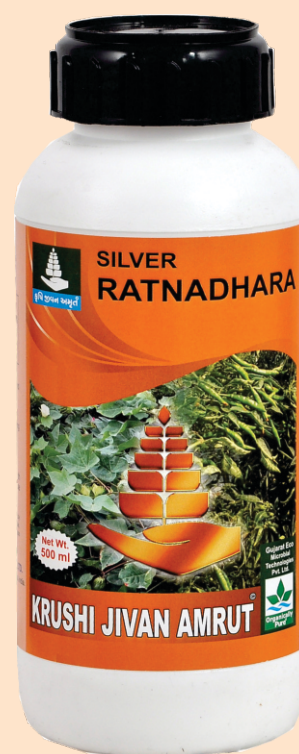
a) The contents of the package should be used within 6 months of opening the bottle.

b) Store product in cool dry place away from direct sunlight and moisture.

### Available Packing :

100 ml, 250 ml, 500 ml, 1 Ltr.

Composition	Qty. (%w/w)
a) Potassium Salts of Herbal Oil mixture	24.50%
b) Fulvic Acid	1.00%
c) Aloe vera Gel (as Natural Surfactant)	2.00%
d) Demineralized Aqua	Q.S
<b>Total</b>	<b>100.00%</b>



### Precautions :

a) **Eyes:**

Moderately irritating to the eyes. If product comes in contact with eyes, flush eyes with cool water for about 15 minutes.

b) **Dermal:**

Dermal exposure may cause mild irritation to the skin. Wash hands thoroughly after use.

# DIAMOND

## Natural Seed Health Promoter

### Product Details :

DIAMOND contains a well-diversified consortium of non-genetically modified, non-pathogenic, safe, eco-friendly and micro-encapsulated soil beneficial microbes.

The application of DIAMOND naturally improves soil conditions around the seed and allows enhanced germination, improved seedling vigour and early stage root formation.

The presence of beneficial microbes also induce resistance to fungal diseases, tolerance to salt, chilling and heating stresses by preventing oxidative damage in the plant.

### Use :

a) **Dosage:** 500 g per Acre.

b) **Method of Application:**

500 g DIAMOND may be mixed with suitable basal fertilizer and applied at the time of plantation or 50 g may be mixed with 15 L water and applied as foliar or drenching.

c) **Frequency of Application:**

DIAMOND is preferably applied at the time of plantation. However, it may be conveniently applied as a foliar or drenching anytime during the first 25 days after plantation.

### Tips & Techniques :

a) Frequent doses of lower quantity provide best results.

b) Where the crop is stressed by an acute fungal or pest attack, it is desirable and advised that the product is soaked in water for 24 to 48 hours and applied as a drenching.

c) In case of acute conditions of abiotic and biotic stresses, 500 g of both DIAMOND and PLATINUM can be pre-soaked and applied as drenching.

### Storage & Disposal :

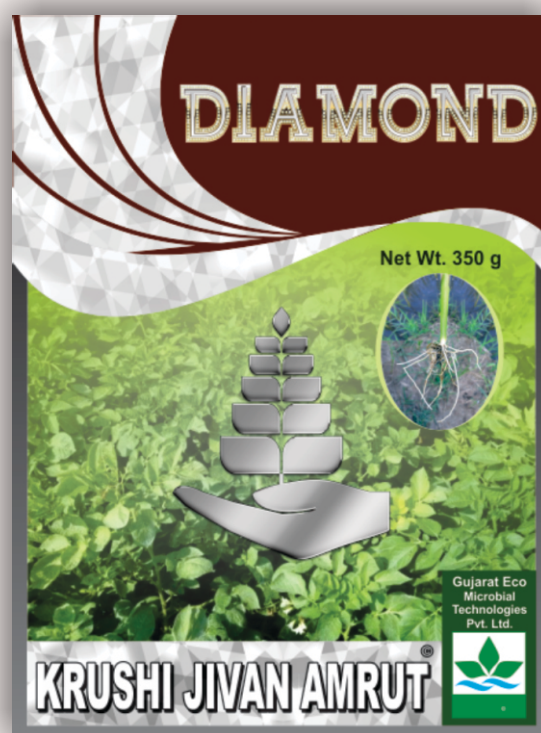
a) The contents of the package should be used within 6 months of opening the pouch.

b) Store product in cool dry place away from direct sunlight and moisture.

### Available Packing :

350 g

Composition	Qty. (%w/w)
a) Proprietary blend of beneficial and naturally occurring microbes (Total Microbial CFU Count : $5 \times 10^7$ /g min.)	0.50%
b) Bacterial Food Supplements (co-factors) & Growth Accelerators	2.00%
c) Mineral Salts	2.55%
d) Beneficial & Inert Carriers	94.95%
<b>Total</b>	<b>100.00%</b>



### Precautions :

a) **Eyes:**

Moderately irritating to the eyes. If product comes in contact with eyes, flush eyes with cool water for about 15 minutes.

b) **Dermal:**

Dermal exposure may cause mild irritation to the skin. Wash hands thoroughly after use.

# TRIOJEET

## Biological Fungicide

### Product Details

TRIOJEET is an eco-friendly biofungicide containing *Trichoderma viride* spores (CFU count :  $2 \times 10^6$  /g min.) and effective against controlling and preventing wide variety of seed and soil borne diseases caused by plant pathogenic fungi. *Trichoderma viride* attacks the hyphae of the targeted pathogens by creating a wall primarily around them that does not allow the pathogens to grow and then releases enzymes which helps to drain the nutrients out of the pathogens and feed in the *Trichoderma viride* which results in overshadowing of targeted pathogen.

### Composition

### Qty. (%w/w)

a) <i>Trichoderma viride</i> (Spores & mycelia) (CFU Count : $2 \times 10^6$ /g min.)	1.50%
b) Talc Powder	97.00%
c) Carboxy Methyl Cellulose	1.50%
<b>Total</b>	<b>100.00%</b>

### Available Packing :

500 g, 1kg

### Use

#### a) Recommended for :

Effective against seed and soil borne diseases such as Root rot (found occurring in Pulses, Sesamum, Pigeon pea), Damping off (found in Chili seedling), Wilt (Cowpea), etc.

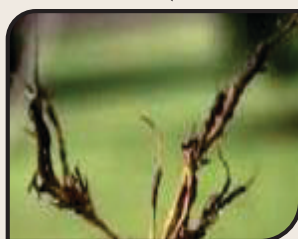
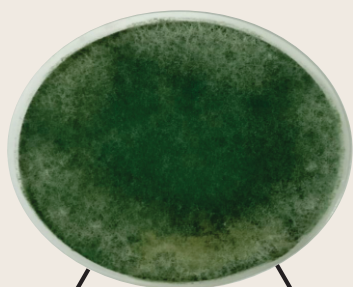
#### b) Method of Application :

##### For seeds:

Mix required quantity of the seeds with the required quantity of Triojeet and ensure uniform coating, shade dry and sow.

##### For soil :

Mix 1 – 1.5 Kg of Triojeet with 100Kg of properly decomposed Farm Yard Manure or any other suitable Manure and spreads uniformly over Acre of land harvesting. Repeat if required.



# BIO COMPOSTER

## Natural Organic Decomposer

### Product Details :

BIO COMPOSTER uses the powerful waste digesting properties of selected proprietary natural microbes to speed up the composting process. Our formulation accelerates the breakdown processes for complete digestion in a short time period. Appropriate use of BIO COMPOSTER will generate high heat (temperatures up to 55°C-70°C) which inactivates weed seeds, human and animal pathogens, and viruses. The product consists of thermophilic (high temp), mesophilic (ambient temp) and psychrophilic (low temp) microbes to ensure degrading and digestion activity in a wide range of temperature conditions. Bio Composter accelerates degradation of cellulose and lignin from plant materials. Accelerated rates of composting prevent foul odors and creates nutrient rich humus in the shortest possible time.

### Use :

#### a) Dosage :

1 kg per Tonne of material to be composted.

#### b) Method of Application :

##### First Application :

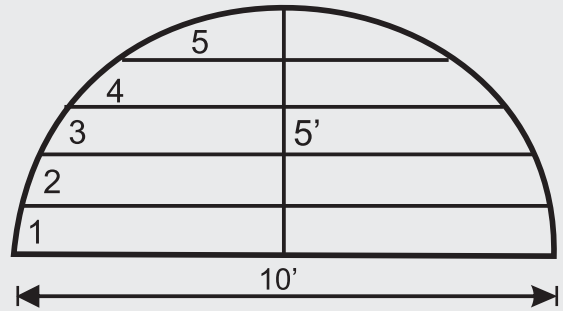
- 1) 500g in between layers as heap is constructed. The liquid suspension should be applied as a fine spray in between each 6" layer.
- 2) Additional water may be sprayed to ensure approximately 25% to 30% moisture. No more than a drop or two of water should ooze out when a 100g of material is squeezed.
- 3) Wood Chips / Sawdust may be added to the heap periodically to ensure aeration.
- 4) The temperature of the heap should be maintained at 60°C to 70°C for at least 3 days of the 7 days total.

##### Second Application :

- 5) 500 g in between layers as the heap is turned and reconstructed.  
After 7 days, the entire heap should be turned and items 1) to 3) repeated.
- 6) After further 7 days, the heap should be turned one final time and allow 7 more days for mesophilic composting.
- 7) Bag the compost after screening through a suitable mesh screen.

### Available Packing :

5 kg



Composition	Qty. (%w/w)
a) Proprietary blend of beneficial and naturally occurring microbes (Total Microbial CFU Count: $1 \times 10^8$ / g.)	1.00 %
b) Bacterial Food Supplements (co-factors) & Growth Accelerants	34.00 %
c) Beneficial & Inert Carrier	65.00 %
<b>Total</b>	<b>100.00%</b>

